



RHB
Neuro

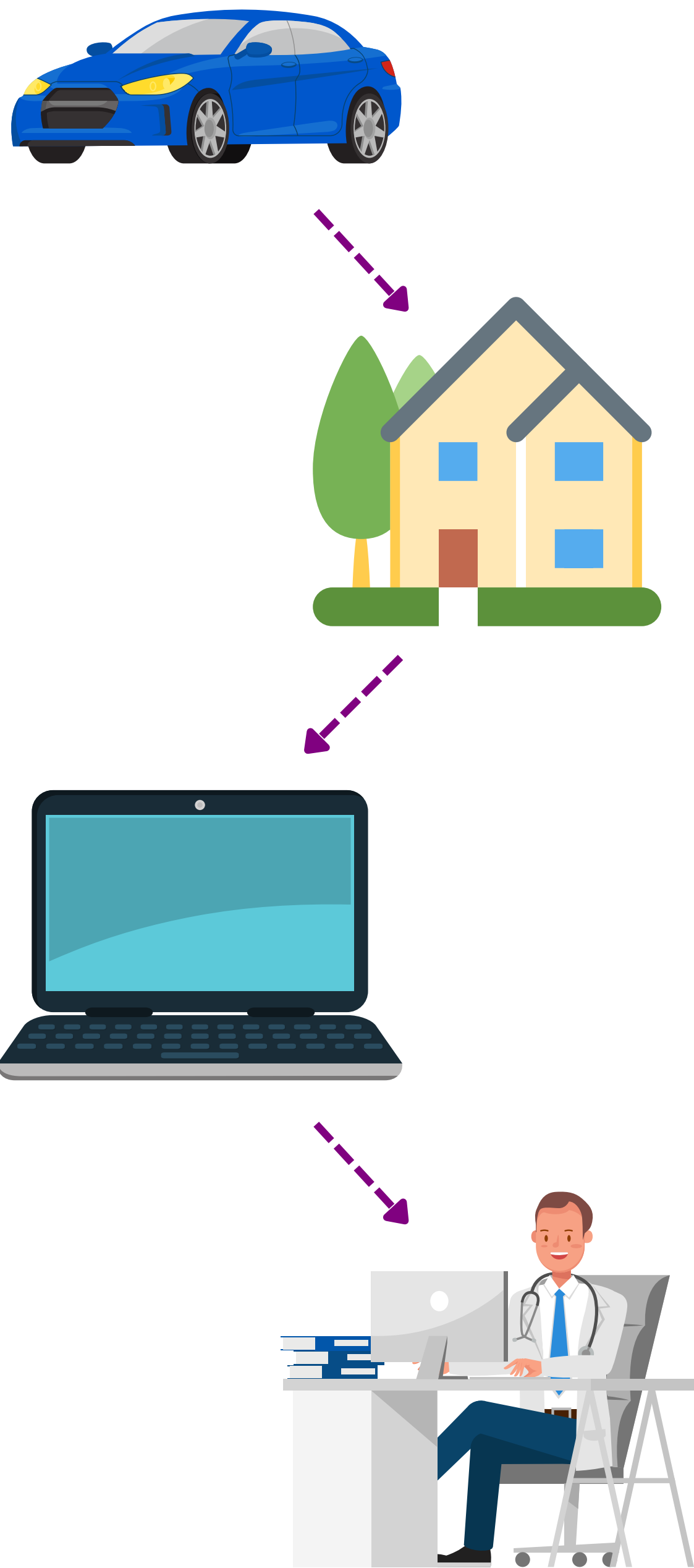
AMBULATORY EEG

e*lec*tro*en*ce*pha*lo*gram

Your doctor has requested a test be performed called Ambulatory EEG monitoring. This test is a powerful tool in the assessment and treatment of many various neurological disorders.

During this test, small electrodes placed on your scalp will detect electrical activity from your brain and be stored on a computer. The period of monitoring in which you will be wearing the electrodes is typically 3 days.

After arriving to your home, the technologist will begin applying the small electrodes to your head. This will take 1-2 hours. The equipment will be used to record your brain waves, and a camera will record your body movements.



EXAM DO'S AND DON'TS

1) Eat normally, and take your regularly scheduled medications as prescribed by your doctor unless directed otherwise by your doctor.

2) Wash your hair beforehand using only shampoo and water. Don't use styling aids such as hair gels, mousse, hairspray or oils, as these types of products interfere with the electrodes and limit usefulness of the test.

3) Wear loosely fitted clothing (e.g. button down shirt).

4) Have a caregiver present during the test.

5) If possible, have a table next to a socket for easier setup.

6) Please do not shower, or use a hair dryer during your procedure.

7) Please do not touch the on and off button on the trackit system

